

Slotworx Porsche Cup

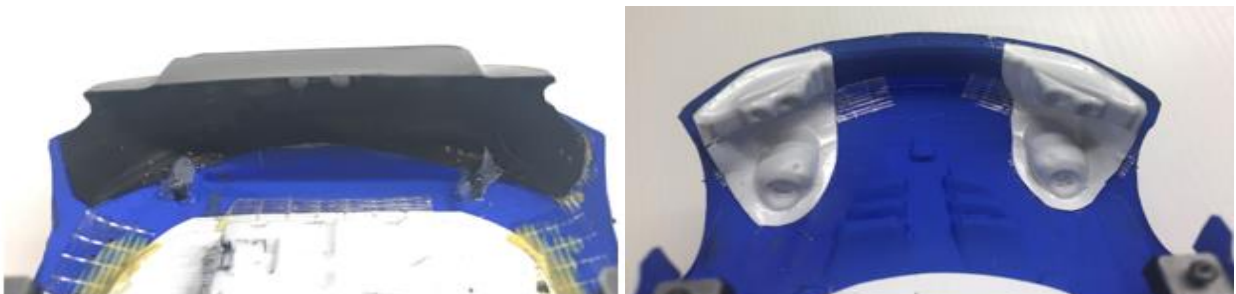
01/01/2025

Body

- a) Must use Slotworx Cup Car lexan body kit components only.
- b) Must not be cut above defined body cut lines leaving the front splitter complete.
- c) Must be fitted to the chassis such that the roof height with the guide out of play is min of 48.5mm @ 1.0mm ride height.
- d) Must have a completely opaque livery with a minimum of 3 race numbers.
- e) Must use Slotworx body mount plates with a min 45mm long piece of body mounting foam.
- f) Must use a complete Slotworx rear wing attached using Slotworx wing mounts in original marked position as shown below.



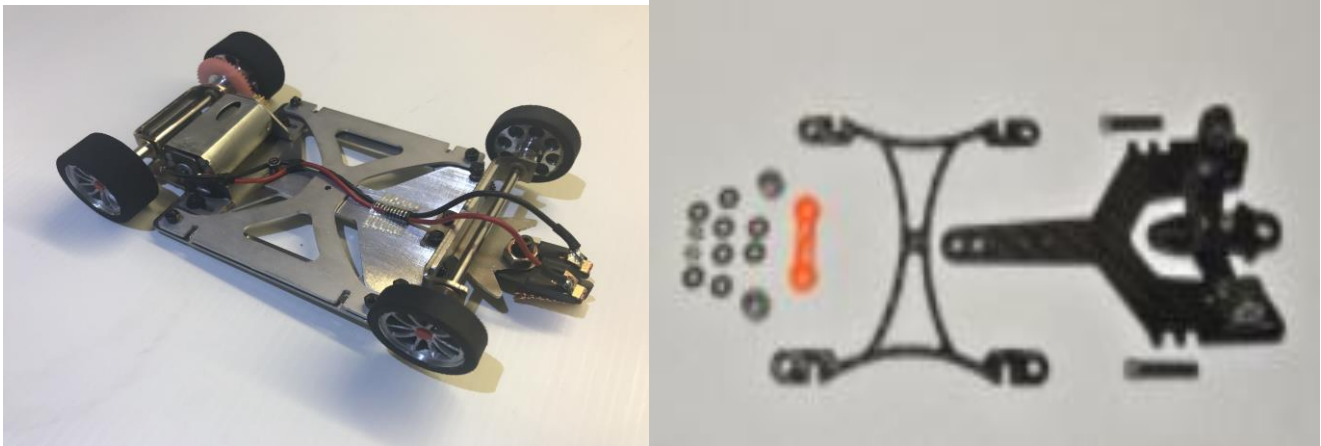
- g) Must have rear diffuser 'Tech Check' dots/dimples visible as shown above.
- h) Rear diffuser is designed so the red tail light lenses are installed on the diffuser, a mask is used on the body to provide a clear lens to look through at the tail light to replicate depth and realism (see wing image above). The diffuser must be cut so that the rear tail light lenses are/could be seen, as shown below (looking from the inside). If the red lenses have been put on the outer shell of the body that is OK, as long as the diffuser is cut so that they could be seen if installed correctly.
- i) Must have supplied flexible exhaust pipes fitted (or other representation of exhaust pipes) preferably with a flexible glue like contact or shoe goo.



- j) Must fit front head light/fog light inserts as shown above.
- k) Must use supplied Slotworx interior painted with minimum 3 colours whilst driver must appear to be wearing a seat belt harness.
- l) Must cover the complete chassis including wheels when viewed from above.

Chassis

- a) Must be constructed using any mix of Gen 1 chassis components with any Gen 2 carbon fibre chassis upgrade components (below) as desired.



- b) Must assemble a pure Gen 1 chassis in the exact manner as the pictured chassis.
c) Must install rear axle carrier to the REAR of the chassis plate for all chassis builds.
d) Must install the Gen 1 front axle carrier to the REAR of the Gen 1 “T” plate.
The correct wheel base (103mm) and polar length (114) is automatically achieved when a chassis is constructed using Gen 1 “T” plate (as pictured).
e) Must position the axle carriers and guide holder accurately on a Gen 2 “T” plate to achieve the correct wheel base and polar length of the chassis.
Correct position is achieved by using these measurements (+/- 1mm).

From Rear of Rear Axle Carrier to:-	
Front of Front Axle	C/L Guide Post
111.5	121.0

- f) Must assemble chassis using screws and nuts only utilising the original mounting holes.
g) Must not use any soldering in assembly however glue and Loctite type products may be used to secure fastenings.
h) Must have at least 2 springs present for suspension on “T” plate.
i) Must only flatten and deburr chassis components if required as this is the only blueprinting permitted.
j) Must not dampen the “H” plate movement by any means whatsoever.
k) May use PC board, clips, tape, cable ties, shrink tube, etc to manage lead wires.
However done it MUST not influence the normal movement of the 'H' and 'T' plates and comply with all other rules - soldering is permitted to install lead wires.
l) May use the following parts of free make if desired:
1) Any commercially available motor mounting bracket and stay.
2) Any commercially available front axle mounts utilising the original mounting holes/slots may be used on the Gen 2 “T” plate.

Weight & Dimensions

- a) Min total weight 155g for Long Can motors and 145g for Short Can motors
- b) Min 1.0mm clearance at Tech and Min 0.5mm during or end of race measured with the guide out of play; all wheels flat on the tech block and the body removed.
- c) Max front spur 83mm measured at the widest point.
- d) Max rear spur 82mm measured at the widest point.
- e) Any additional weighting must be on top of the chassis.

Motor & Gears

- a) 13D long or short can motors as specified by raceway or race meeting.
- b) Motor coolers or heat dissipating products of any kind are not permitted
- c) A plastic M50 rear spur of 44T must be used whilst the pinion size is specified by the raceway or race event rules.

Axles and Wheels

a) **General**

- 1) Wheels must have three-dimensional wheel inserts fitted. (No photo etched or vinyl cut reproductions allowed).
- 2) Any oilites or ball races are legal and may be glued or soldered in position.

b) **Front Wheels:**

- 1) Plafit or Scaleauto wheels may be used.
- 2) Rims - diameter 21mm; min width 6mm
- 3) Tyre - min diameter 25mm; min width 6mm (with 5mm contact).
- 4) Hardening/coating of the tyres is permitted.
- 5) Any 3mm axle of solid material is permitted (including carbon or titanium).

c) **Rear Wheels:**

- 1) **MUST BE PLAFIT RIMS AND BM RUBBER ONLY.**
- 2) Rims - diameter 21mm; max width 13mm.
- 3) Tyre - diameter at any time during the race min 25mm and max width 13mm.
- 4) Only 3mm axle of solid steel is permitted (no hollow, titanium or carbon etc)

Lights

If lights are required by the event during night races, minimum 2 front and 2 rear tail lights are required. The lights must flash when the car de-slots to assist in marshalling.