

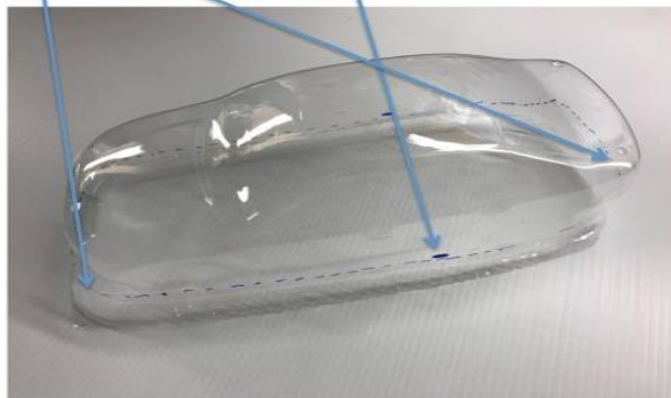
# Slotworx 1/24 V8 Rules

---

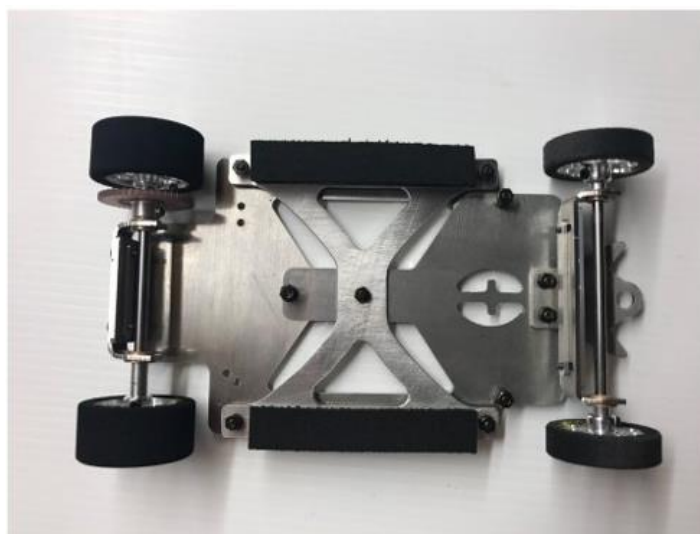
## Body

- a) Only Slotworx Ford FGX and Holden VF V8 lexan body kit components may be used.
- b) Modern, retro or fantasy liveries accepted. Body must be completely painted or decal coloured. Minimum of 3 race numbers on the car.
- c) The supplied body mount plates must be used. Plafit or custom made mounts are NOT allowable.
- d) Rear wings complete with the sides must be attached in the original position indicated on the vac-form.
- e) Supplied interior must be used with minimum 3 colours and driver must appear to be wearing a seat belt harness.
- f) Minimum Body weight is 23 gms and it must be cut as illustrated below.

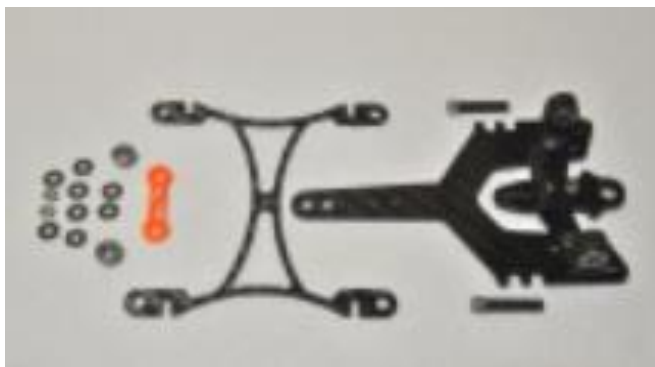
Tech check marks in the sil lines on the body must be visible.  
The front splitter on the bodies must be in tact. The clearly defined rear cut lines on the bodies must be cut no higher to reduce weight.



## Chassis



- a) Any mix of Gen I chassis components (pictured above) must be used in conjunction with any Gen II chassis upgrade components (pictured below) as desired.



On the Gen II “T” plate any front axle mounts using the original mounting holes may be used with a solid axle of any material.

- b) A pure Gen I chassis must be assembled in the exact manner as the pictured chassis. (note that 55mm full length body mounting foam is NOT required for the V8 class)
- c) Gen I axle carriers are installed such that the rear axle carrier is to the REAR of the chassis and the front axle carrier to the REAR of the “T” plate. For Gen II the rear axle carrier is to the REAR of the chassis also.
- d) Wheel base and polar length cannot be altered in any way on the pictured Gen I chassis. If using Gen II “T” plate the wheel base MUST be set to 114 (+/-) 1mm whilst the Polar Length MUST be set to 125 (+/-) 1mm. This is measured as follows: -

Actual Measurements		From Rear of Rear Axle Carrier to:-	
Wheel Base	Polar Length	Front of Front Axle	C/L Guide Post
114	125.0	122.5	132.0

- e) No traction magnets allowed, only magnets present must in the motor.
- f) The chassis must be assembled with screws and nuts using the original mounting holes. No drilling of additional holes.
- g) Front “T” plate must have at least 2 springs present for suspension.
- h) Either 3mm axle oilites or ball races may be used. Gluing or soldering of axle bearings is permitted, no other chassis soldering is allowed.
- i) Flattening and de burring of the chassis is permitted. Any blueprinting not specifically mentioned in these rules is not allowed.
- j) The length of the guide blade cannot exceed 28mm and this guide blade is the only part of the chassis that may enter the track's slot.
- k) No additional mechanical aids or dampening allowed to the “H” plate, this includes tape.

- l) Parts of free make are restricted to the following:
- 1) Nuts, bolts, spacers, washers and springs.
  - 2) Guide and guide nut.
  - 3) Braid, braid clips & lead wires.
  - 4) Solid steel axles.
  - 5) Ballast weights.
  - 6) 3 dimensional wheel inserts.
  - 7) M50 spur gear and pinion.
  - 8) Motor Mounting bracket and stays.
  - 9) Devices to manage lead wires including PC board, clips, tape, cable ties, shrink tube, etc. However they MUST not influence the normal operation and movement of the 'H' and 'T' plates and comply with all other rules.

### **Weight & Dimensions**

- a) Minimum total weight 155g.
- b) 1.0mm minimum ground clearance at the start of the race. Ground clearance during or at the end of any race must never less than 0.5mm.
- c) Ground clearance is measured with the guide out of play so that all four wheels sit flat on the tech block with the body removed.
- d) Maximum front spur 79.0mm measured at the widest point including any protruding wheel inserts.
- e) Maximum rear spur 81.0mm measured at the widest point including any protruding wheel inserts.
- f) Additional weighting of the chassis may only be on top of the chassis and not be visible when viewing the chassis from below.

### **Motor & Gears**

- a) 13D long or short can motors as specified by raceway or race meeting.
- b) Soldering may only be used to attach the lead wires to the motor terminals, PCB wire management junction (if used) and guide braid clips.
- c) Motor coolers or heat dissipating products of any kind are not permitted.
- d) Only M50 pitch pinion and M50 spur gears may be used.
- e) A 44T rear spur must be used. Pinion size is to be specified in raceway or race meeting rules.

## **Axles and Wheels**

- a) Only 3mm solid steel axles are permitted, no hollow, titanium or carbon axles excepting for the Gen II independent carbon fibre 'stub' axles **or any other solid axle (including carbon or titanium) is allowed for the front.**
- b) All four wheels must be fitted with three-dimensional wheel inserts correct to the car. (No photo etched or vinyl cut reproductions allowed).
- c) The wheels must not protrude outside of the body when viewed from above.
- d) **Front Wheels:**
  - 1) Plafit or Scaleauto wheels may be used.
  - 2) Rims 21.0mm diameter and minimum 6.0mm wide.
  - 3) Minimum tyre width 6.0mm.
  - 4) Minimum diameter at any time during the race is 25.0mm.
  - 5) Hardening/coating of the tyres is permitted.
  - 6) Must make a minimum of 5.0mm contact with the tech block.
  - 7) Independent wheels are permitted only if using Gen II front bearing holders.
- e) **Rear Wheels:**
  - 1) **REAR WHEELS MUST BE PLAFIT RIMS AND BM RUBBER ONLY.**
  - 2) Rims 21.0mm diameter x 13.0mm wide.
  - 3) Maximum tyre width 13.0mm.
  - 4) Minimum diameter at any time during the race 25.0mm.
  - 5) Maximum diameter at start of the race 28.5mm (i.e. the Plafit standard size as purchased).
  - 6) Cleaning of the tyres may only be performed with a tape roll and/or Shellite provided by the Race Direction.

**THESE RULES REMAIN CURRENT FROM 27 April 2023**

**ANY UPDATES WILL BE NOTIFIED AS NECESSARY**

**Updated 27 April 2023** regarding front axle mounts and axles